

Technical Information

Ref. No. **KDKR-0077**

<Date> 2015.02.12

제품명	Setup Tool
제 목	Setup Tool 사용하여 주소록 데이터 변환

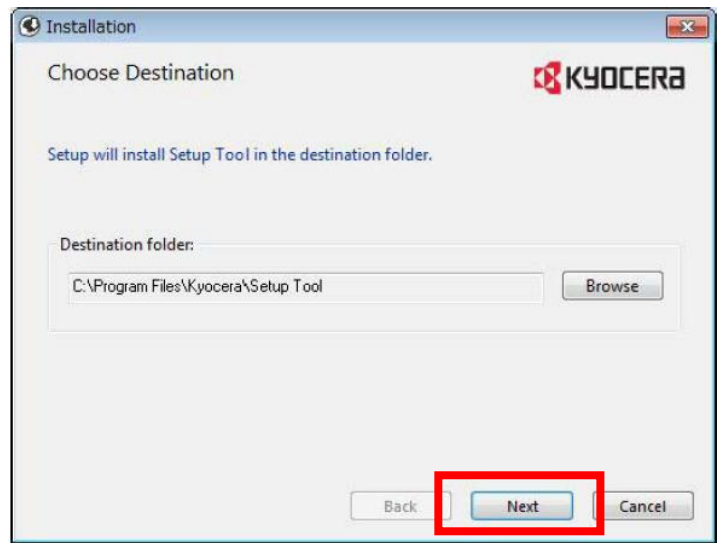
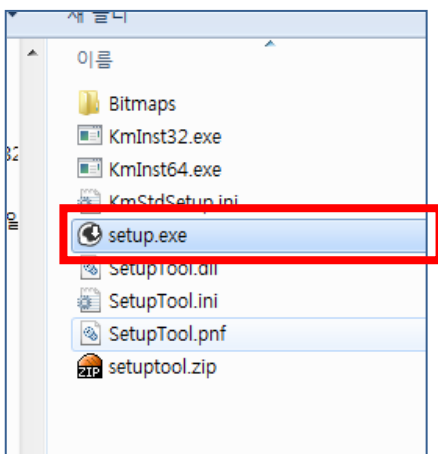
[내용]

Setup Tool을 사용하여 A모델의 주소록 데이터를 B모델에 맞도록 변환하여 입력하기

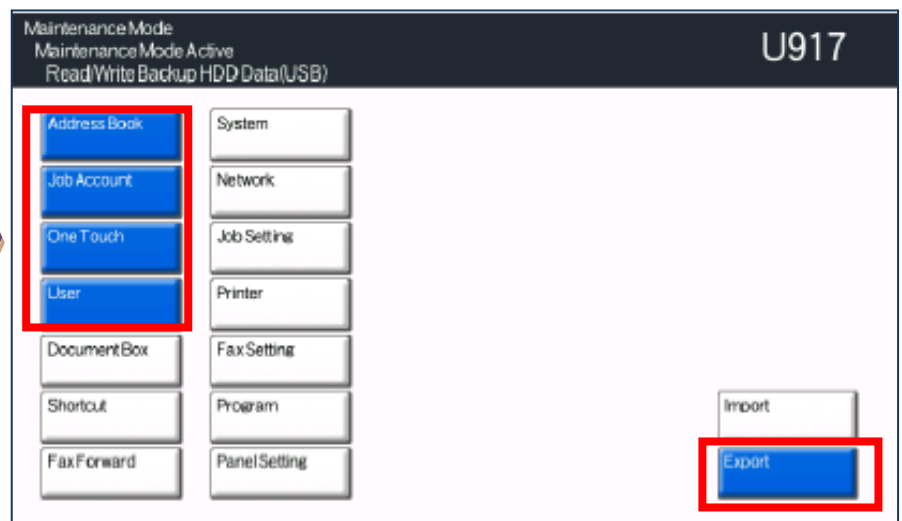
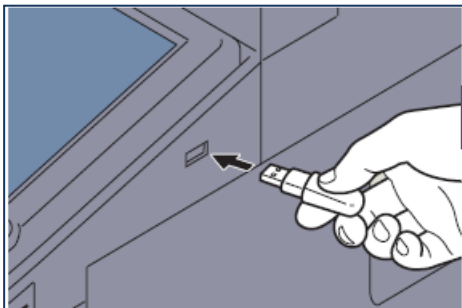
*참고

- 변환가능한 데이터 : 주소록, 계정 리스트, 계정 설정, 사용자 리스트, 권한 설정, 네트워크 그룹

[방법]



1. Setup Tool을 PC에 설치한다.

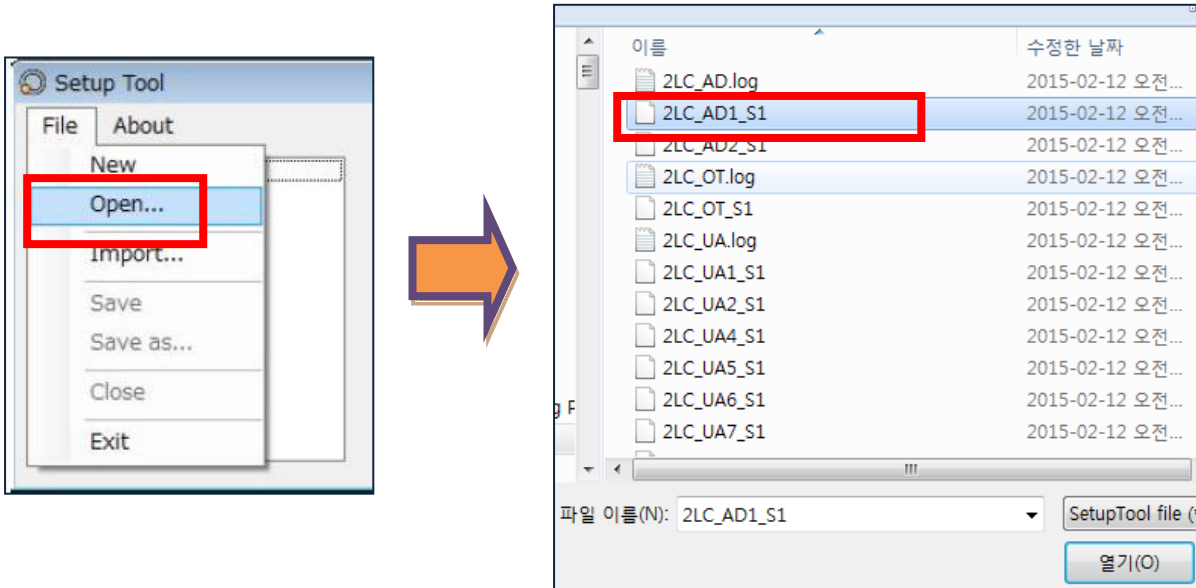


2. USB포트에 USB메모리를 꽂은 후, 메인テナンス 모드 U917에서 내보낼 데이터를 선택하여 Export한다.

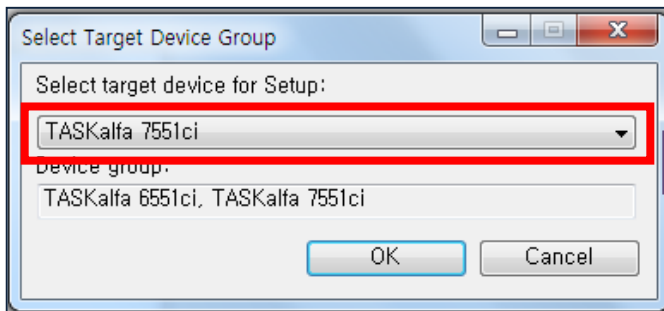
Technical Information

Ref. No. **KDKR-0077**

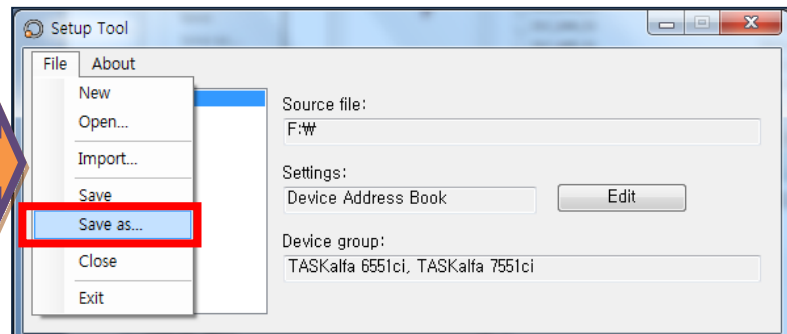
<Date> 2015.02.12



3. Setup Tool을 실행하여 File > Open을 선택하고 Export한 데이터를 선택한다.



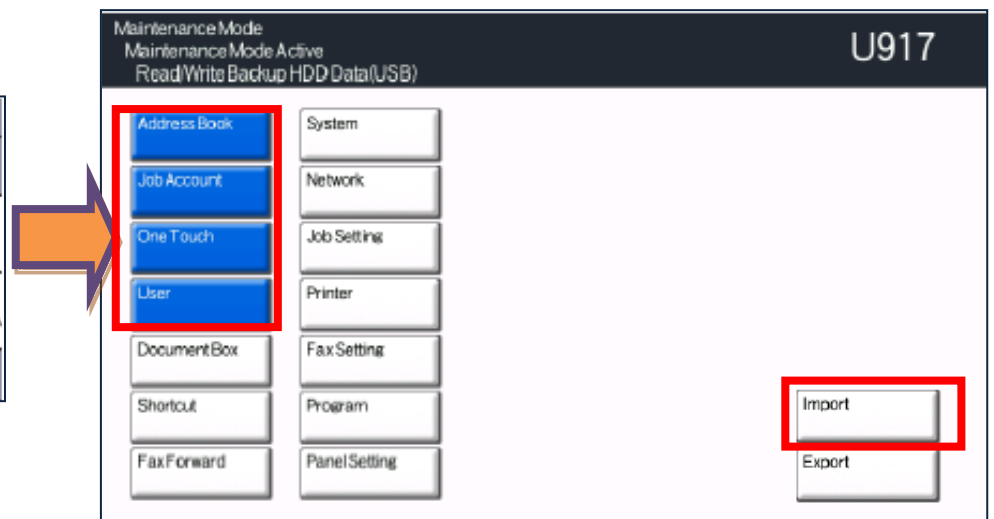
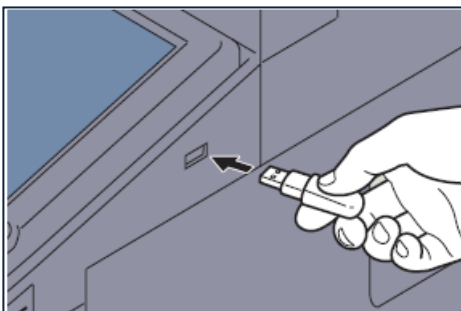
4. 리스트에서 대상 모델을 선택한다.



5. File > Save as를 선택하여 변환된 데이터를 저장한다.

*참고 : 한번에 한가지의 아이템만 선택됨.

여러 개의 아이템일 경우 위의 과정을 반복하여 실행



6. USB메모리 루트에 변환한 데이터를 저장한 후 USB포트 꽂는다

7. 메인テナンス 모드 U917에서 입력할 데이터를 선택하여 Import한다.

Technical Information

Ref. No. **KDKR-0077**

<Date> 2015.02.12

※ 파일명 리스트

Item	File names
Device Address Book	XXX_AD1_S1, XXX_AD2_S1, XXX_OT_S1
Account List	XXX_AC1_S1
Device Accounting Settings	XXX_AC2_S1
Device User List	XXX_UA1_S1, XXX_UA7_S1
Device Authentication Settings	XXX_UA2_S1, XXX_UA5_S1, XXX_UA6_S1
Device Network Group	XXX_UA4_S1

* XXX : 모델 코드
(모델 코드가 같은 경우는 주소록 변환필요 없음.)

※ 모델 코드

Code	Model names
2GR	KM 3050, KM4050, KM 5050, CS 3050, CS 4050, CS 5050
2H7	CS 500ci, CS 400ci, CS 300ci, CS 250ci TASKalfa 250ci, TASKalfa 500ci, TASKalfa 400ci, TASKalfa 300ci
2H9	LS-1028MFP, KM-2810, FS-1028MFP LS-1128MFP, KM-2820, FS-1128MFP
2K3	FS-6030MFP, TASKalfa 305, FS-6525MFP, FS-6025MFP, TASKalfa 255, TASKalfa 306i, FS-6530MFP, TASKalfa 256i
2KA	LS-C8500DN, FS-C8500DN
2KS	CS 420i, CS 520i, CS 300i TASKalfa 520i(J), TASKalfa 420i(J), TASKalfa 520i, TASKalfa 300i, TASKalfa 300i(J), TASKalfa 420i
2KX	FS-C2026MFP, FS-C2026MFP+ FS-C2126MFP, FS-C2126MFP+
2KY	CS 552ci TASKalfa 552ci
2KZ	CS 206ci, CS 256ci, CS 205c, CS 255c FS-C8020MFP, FS-C8520MFP, TASKalfa 206ci, TASKalfa 255c, TASKalfa 256ci, TASKalfa 205c, FS-C8025MFP, FS-C8525MFP

Technical Information

Ref. No. **KDKR-0077**

<Date> 2015.02.12

Code	Model names
2LC	CS 2550ci, CS 3050ci, CS 3550ci, CS 4550ci, CS 5550ci, CS 6550ci, CS 7550ci
	CS 3500i, CS 4500i, CS 5500i, CS 6500i, CS 8000i
	TASKalfa 2550ci, TASKalfa 2550ci(J), TASKalfa 7550ci(J), TASKalfa 4550ci, TASKalfa 3050ci, TASKalfa 3550ci, TASKalfa 3050ci(J), TASKalfa 4550ci(J), TASKalfa 6550ci, TASKalfa 6550ci(J), TASKalfa 5550ci, TASKalfa 5550ci(J), TASKalfa 3550ci(J), TASKalfa 7550ci
	TASKalfa 4500i(J), TASKalfa 4500i, TASKalfa 3500i(J), TASKalfa 8000i(J), TASKalfa 5500i(J), TASKalfa 8000i, TASKalfa 3500i, TASKalfa 6500i(J), TASKalfa 5500i, TASKalfa 6500i
2LW	LS-1035MFP, FS-1035MFP, FS-1030MFP, FS-3040MFP+, FS-3040MFP
	FS-1130MFP, FS-3140MFP, LS-3140MFP, LS-3140MFP+, FS-1135MFP, FS-3140MFP+, LS-1135MFP
2M8	FS-3540MFP
	LS-3640MFP, FS-3640MFP
	FS-C2526MFP
	FS-C2626MFP, TASKalfa 265ci
2MN	FS-C8600DN, FS-C8650DN, LS-C8650DN, LS-C8600DN
IEP	CS 256i, CS 306i, CS 255, CS 305
	CS 3051ci, CS 3551ci, CS 4551ci, CS 5551ci
	CS 3501i, CS 4501i, CS 5501i
	CS 6501i, CS 8001i
	CS 7551ci, CS 6551ci
	TASKalfa 3051ci, TASKalfa 3551ci, TASKalfa 5551ci, TASKalfa 4551ci
	TASKalfa 5551ci(J), TASKalfa 3051ci(J), TASKalfa 4551ci(J), TASKalfa 3551ci(J)
	TASKalfa 4501i, TASKalfa 5501i, TASKalfa 3501i
	TASKalfa 4501i(J), TASKalfa 5501i(J), TASKalfa 3501i(J)
	TASKalfa 8001i, TASKalfa 6501i
	TASKalfa 8001i(J), TASKalfa 6501i(J)
	TASKalfa 6551ci, TASKalfa 7551ci
	TASKalfa 7551ci(J), TASKalfa 6551ci(J)